

# Changes in Version 5.6.101 (09/16/2024) since the release 5.6.88 (04/24/2024):

## New Features:

- Added a new indicator called "TradeWave" in the browser Charts. Additionally, a TradeWave Report is included in the browser chart.



### TradeWave Report

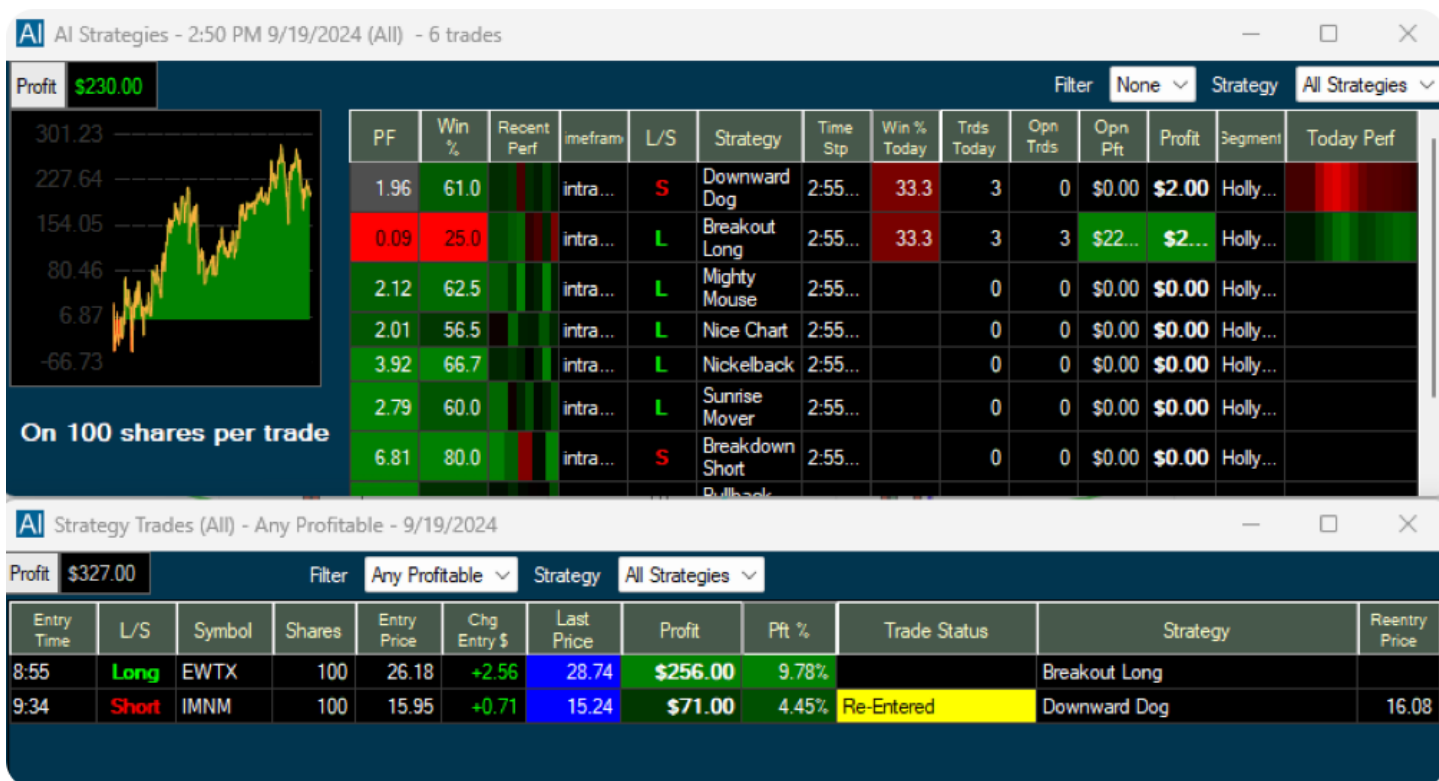
#### TradeWave Trade Summary

Long

Side	Entry Date	Entry Price	Exit Date	Exit Price	Closed Profit	Open Profit
Long	09/17	\$216.16	09/17	\$215.78	-0.18%	
Long	09/17	\$216.13	09/17	\$215.63	-0.23%	
Long	09/17	\$216.24	09/18	\$220.07	1.77%	
Long	09/18	\$220.63	09/18	\$220.58	-0.02%	
Long	09/18	\$221.30	09/18	\$220.32	-0.44%	

7 Trades, Total Profit: 0.49%

- Changed the behavior of the Order Entry Control component in Brokerage Plus to improve the ability to manually modify price and share values.
- Symbol List window remembers its last position while the application is running.
- Add the ability to persist AVWAP on symbol change, so when you come back to the same symbol, your previous AVWAP is displayed until you remove it.
- New Zoom and Scroll Controls settings in the Chart tab of the Options windows allows the use of these controls within a browser chart.
- Consolidate Conservative, Moderate, and Aggressive Profit to just one Profit in the AI Strategies and AI Strategy Trades windows.



The screenshot shows the 'Strategy Trades' window with a profit of \$327.00. It displays a table of trades with columns for Entry Time, L/S, Symbol, Shares, Entry Price, Chg Entry \$, Last Price, Profit, Pft %, Trade Status, Strategy, and Reentry Price.

Entry Time	L/S	Symbol	Shares	Entry Price	Chg Entry \$	Last Price	Profit	Pft %	Trade Status	Strategy	Reentry Price
8:55	Long	EWTX	100	26.18	+2.56	28.74	\$256.00	9.78%		Breakout Long	
9:34	Short	IMNM	100	15.95	+0.71	15.24	\$71.00	4.45%	Re-Entered	Downward Dog	16.08

## Bug Fixes:

- Fixed exception when changing the chart by typing in a symbol.
- Fixed exception when loading a layout containing a dock window of a certain size.
- Fixes issue in the Brokerage Plus causing many position errors to be recorded in the Messages tab and may cause Brokerage Plus to stop responding.
- Fixed the "IBrowser instance is no longer valid" exception in the Positions tab/window.
- Fixes error in the Treemap view sorting options, when the column does not exist in the grid, for Top List windows.
- Updated NuGet packages and installed the latest version of VC++ libraries (may require the user to reboot the computer).
- Fixes issue in the Brokerage Plus causing many position errors to be recorded in the Messages tab and may cause Brokerage Plus to stop responding.
- Correct issue where the Treemap was blank in Market Explorer windows.
- Honor user selected Time Zone when displaying response times and intervals in the Market Explorer windows.

- Address issue causing the “DateTime did not have the Kind property set correctly” exception when connecting to Interactive Brokers in Brokerage Plus.
- Fix for the “IBrowser instance is no longer valid exception” when changing accounts in Position tabs in Brokerage Plus.
- Remove SHA-1 code signing from the Inno Install scripts. TPro will not install on Windows 8 machines.
- Fix the YTD scan for AVWAP not drawing the AVWAP line.
- Added price to text to speech configuration for Alert, MultiStrategy, AI and Price Alert windows.
- Fix issue where Strategies do not align with accounts in Positions tab in Brokerage Plus.
- Fix error when updating the value of the “Change From Close \$” and “Change From Close %” columns in Brokerage Plus.
- Address exception an error around the market open when Brokerage Plus is connected to ETrade.
- Address “Collection was modified” exception when closing the Long Term Strategy Trades window.
- Display data from the last trading day after post market session and on holidays and weekends in browser charts.
- Fix issue where past symbols are displayed quickly in a chart when you enable browser chart from a non-browser chart.
- Fix Bars / Bar Indicators “appeared” to not update in browser charts.
- MACD Histogram Up/Down colors in browser charts are now consistent with non-browser charts.
- Fix exception in the MouseMoveMessageFilter class of the Single Stock window.